



## Highway Assessment System

Produced in cooperation with and based on

### I - Browse

a John Reid Consultancy Services Limited product,

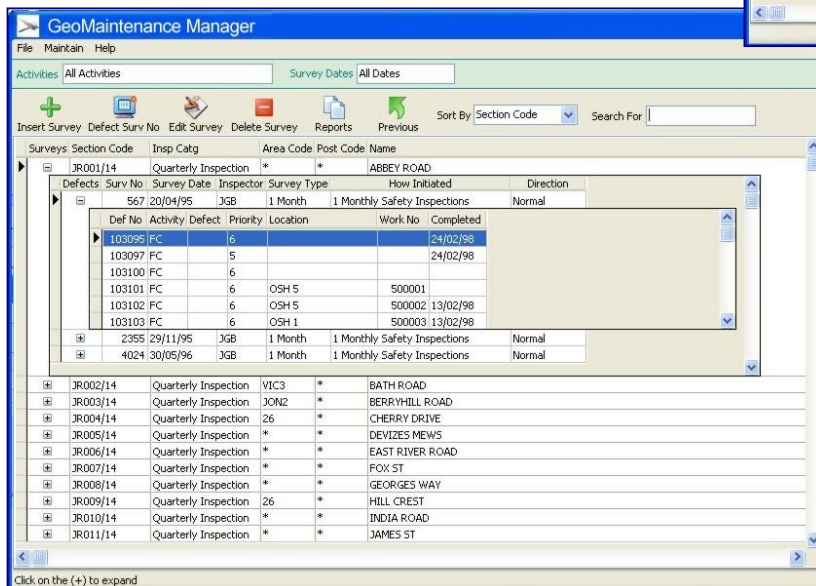
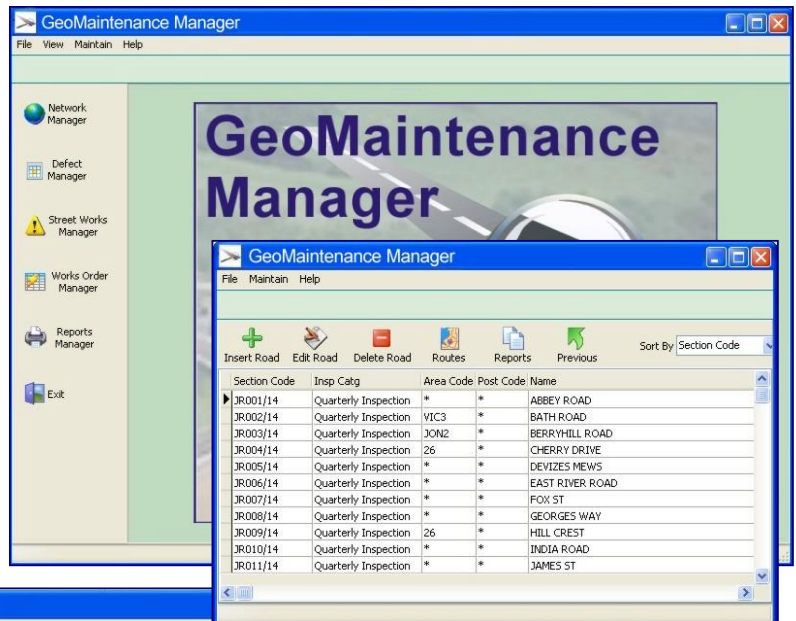
GeoMaintenance Manager has been designed to manage Safety Inspections and Highway Assessments for all classes of roads.

Simple to install, implement and use, the system performs a range of tasks associated with Highway Condition Survey and Assessment and requires the minimum of training to achieve proficiency. GeoMaintenance Manager displays data in spreadsheet formats and has full reporting options for the Performance Monitoring, Works Orders, Insurance, Completed and Outstanding Works.

GeoMaintenance Manager is fully integrated with GeoGrad, Steanne Solutions Field Data Collection Systems, for automated input of Inspections and export of Routes and Defects into the field.

### System Features

- User Control and Login
- Network and Route Managers
- Defect Manager & Loader
- Works Order Production
- Works Order Manager
- Works Order Detail
- Input & Output to Field Systems
- Defect Analysis
- Reports Manager
- Performance Monitoring
- Brief & Full Insurance Reports
- Simple Street Works Manager
- Single or Multi-User Installations
- Self Install and Implementation



### An Integrated Solution

GeoMaintenance Manager brings together many years of highway inspection and software systems production experience and provides a comprehensive solution to everyday operations.

By integrating the office and field based systems and adding, components such as GeoGrad –GIS Field Systems, GeoWorks Manager and GeoClaims Investigation, vital maintenance and inspection operations are streamlined and an efficient process of management easily established.



## Primary User Interface

GeoMaintenance Manager has an extremely clean, unambiguous User Interface containing concise menu options and six primary functions selected through a vertical toolbar.

Each Primary Function displays data in a spreadsheet format with clearly defined headers for each column. Primary functions allowing new entry, editing and deleting of data are accessed through a Horizontal Toolbar. Additional functions are accessed through Menu Options.

## Database

Single and Multiple-User

## Primary Functions

The current Version of GeoMaintenance Manager has the following Six Primary Toolbar Functions:

- Network Manager
- Defect Manager
- Simple Street Works Inspection Manager
- Works Order Manager
- Report Manager
- System Exit

Menu Options provide the following Functions:

- File
  - Printer Setup
  - Folder
  - Exit
- View
  - Roads
  - Surveys
  - Defects
- Maintain
  - User Control
  - Contractors
  - Bill Of Quantities
  - Database
  - E-mail Options
- Help

GeoMaintenance Manager has preformatted links to Steanne Solutions GeoGrad – GIS Field Data Capture and Management Systems allowing collected Inspection and Surveys to be entered electronically into the system. Data may similarly be transferred to the Field devices for maintenance, re-inspection and repair measurement purposes.

Generated Works Orders may be passed to GeoWorks Manager for allocation and control of maintenance operations.

Inspection and Maintenance Data from the system is also available to the GeoClaims Manager System for substantiation in defence of instances of third party claims.

## A Module of the Steanne Solutions GeoManagement Suite of Software

## Network Manager Functions

Includes:

- Section Code
- Inspection Category
- Area Code
- Post Code
- Street Name

Functions Include:

- Insert, Edit & Delete Road Details
- Insert, Edit/View & Delete Routes

## Defect Manager Functions

Includes:

- Details of Surveys
  - Inspector
  - Date
  - Survey Type
  - Defect Details
- Defect Details
  - Activity
  - Priority
  - Location
  - Works Number (If Allocated)
  - Date of Survey
  - Work Completion Date
- Data Transfer to and from the Field Systems

## Simple Street Works Inspection Manager

Includes:

- SWA Surveys
  - Section Code
  - Street Name
  - Date
  - Inspector
  - Survey Type
  - How Initiated
  - Utility
  - Category

## Works Order Manager

Includes:

- Works Order Details
  - Defects
  - W/O Number
  - Assigned Contractor
  - Defect Details / Quantities
  - Date Issued
  - Status
  - Completion Date

## Reports

Includes:

- Brief Insurance
- Detailed Insurance
- Work Due
  - Sections Overdue
  - From Surveys
  - By Route Summary
  - By Route with Sections
- Defect Performance
- Analysis of Defects
- Section Costs
- Street Works Surveys
- Export to CSV