



## Management of Works Orders

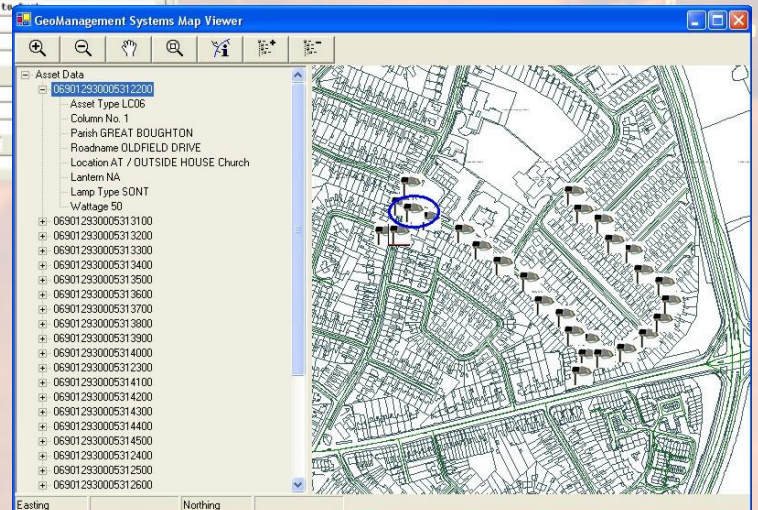
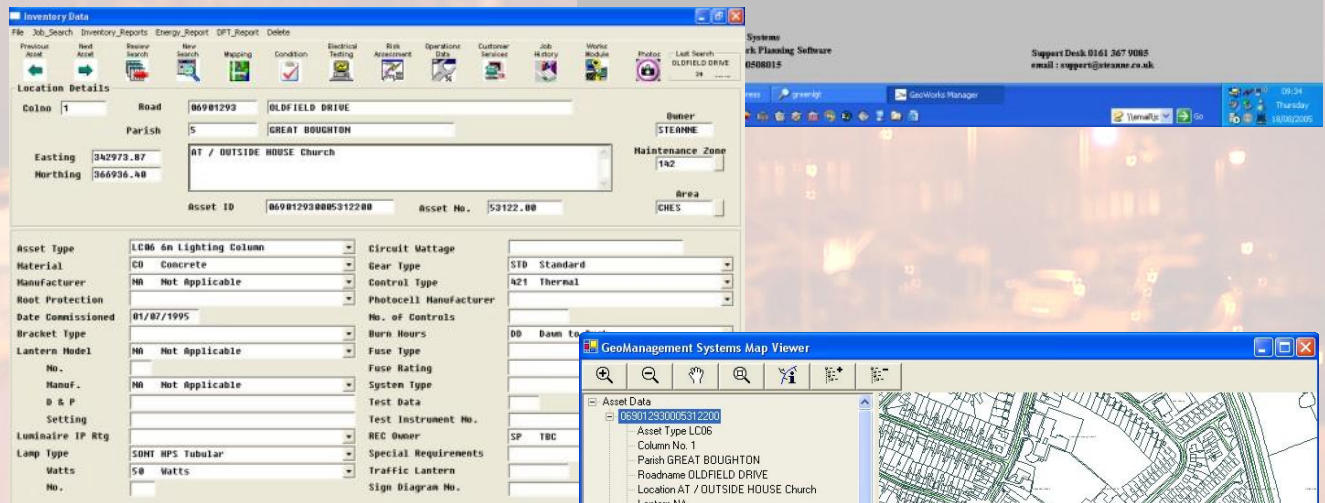
GeoWorks Manager has been designed to manage the demanding requirements of today's asset and term maintenance contracts.

Simple to install, implement and use, the system performs a range of tasks associated with Highways, Street Lighting, Building, Construction and Maintenance Contracts and requires the minimum of training to achieve proficiency. GeoWorks Manager is icon and menu driven and displays data in spreadsheet formats with options for Programming and Works Control, Applications and Valuations, Budgetary Control and Invoice Processing.

GeoWorks Manager is fully integrated with GeoGrad -GIS, Steanne Solutions Field Data Collection Systems, for automated Asset Maintenance, output of Work Jobs including Work Gang Allocation and input of Completed and On-going works.

### System Features

- Asset Management
- Integrated Map Display
- Minor Works Control
- Major Scheme Management
- Daily Record Sheet Management
- Work Planning & Progress Control
- Certification / Invoice Payment Control
- Retention Control
- Bill of Quantities Preparation
- Estimating from Base Resources
- Contract Costing to Works Order Level
- Inspection/Complaint Management
- Direct Link to GeoGrad – GIS
- Export to Accounting Systems
- Energy Report
- DfT Report
- KPI Reports



**NEW**

- ◆ Energy Report
- ◆ DfT Report including the requirements of "Well Lit Roads"



## Primary User Interface

GeoWorks Manager has an extremely clean, unambiguous User Interface containing self-explanatory Icon and Menu Options. Each displays data in a spreadsheet format with clearly defined headers for each column.

## Primary Functions

The current Version of GeoWorks Manager has the following Primary Options:

### Database

- Single and Multiple-User
- Asset Register
- Highway Networks

### Programming / Work Control

- Electronic Transfer & Progress of Works Orders with Reports by:
  - Budget Code
  - Location
  - Depot
  - Supervisor
  - Works Order
  - Bill Item
  - Work in Progress
  - Progress to Target
  - Completion Date
- Key Performance Indicator Monitoring
- Full Work Planning & Programming
- Subcontractor Management Linked to Works Orders
- Works Order Progress Accessed Via a Web Page enabled Bulletin Board
- Statistical Analysis related to Schedule and Bill Items
- Works Order Comparison of Costing to Revenue

### Applications & Valuations

- Recording of Measured Works against Works Orders / Bill Items
- Weekly / Monthly Applications with Supporting Data
- Approved Measure Comparison Enquiry and Report between Applied & Approved Quantities / Values
- Detail History of Applications / Approvals "By Period" & "To Date" for full Contract Period
- Production of Interim and Final Measures / Accounts for any Period
- Electronic Data Transfer to and from Client System
- Management Reports to Control Works Status

### Budgetary Control

- Real Time Budgetary Control using Budget / NARIS Codes together with Associated Financial Budgets
- Budget Code Allocation to Works Orders / Estimates together with Subsidiary Cost / Work Code and Location
- Adjustment of Total Committed Costs together with Estimated / Applied Subtotals with Measure Submission & Measure Approval
- Budgetary Enquiry / Reports for "Contract to Date", "Year to Date" and "This Period"

## Management System Interface

- Standard Electronic Interfaces Established with most Major Management Systems to Automate the Flow of Data for the Following Tasks:
  - Receipt of Works Orders and Inventory Data
  - Receipt of Works Order Variations
  - Notification of Works Order Completion Dates
  - Submission of Requests for Payment
  - Receipt from Client of Payment Confirmation
  - Exchange of Client / Contractor Works Order Status Data
  - Update of Inventory to Client Systems Resulting from Maintenance / Repair Operations
- Interfaces Available into Accounting Systems for Posting Certificates / Invoice Raising

## Works Planning & Field Data Manager

- Automated Receipt of Inventory from Client System together with Works Orders
- Works Orders Processed and Optimised into Work Schedules Taking into Account Priority, Target Dates, Locations, Type of Work and Crew Skills Availability
- Works Issued to Operatives Hand Helds Electronically
- Automated Process to Populate Data into GeoGrad – GIS Field Units
- Receipt of Completed Works and Inventory Asset Update

GeoWorks Manager has preformatted electronic links to Steanne Solutions GeoMaintenance Manager and GeoGrad – GIS Field Data Capture Systems allowing Works Data to be transferred seamlessly.

Allocated Works Orders may be processed ready for transfer to the Field Systems together with any relevant Asset Inventory Information.

Completed Works Orders are returned electronically, together with updated Inventory for Asset Register Purposes.

## An Integrated Solution

GeoWorks Manager brings together many years of works order processing and software systems production experience and provides a comprehensive solution to everyday operations.

By integrating the office and field based systems and adding, components such as GeoGrad –GIS Field Systems, GeoMaintenance Manager and GeoClaims Investigation, vital maintenance and inspection operations are streamlined and an efficient process of management easily established.

## A Module of the Steanne Solutions GeoManagement Suite of Software