



Mobile Systems for Surveys, Inspections and Inventory Collection

A natural successor to text and paper based systems; GeoGrad - GIS provides a graphical environment in Pen Windows and Windows Mobile for Survey, GIS Field Data Collection and Data Management Operations. The systems have been designed to provide the flexibility to perform the simplest to the most sophisticated data collection and management tasks in a simple to learn and intuitive environment.

By providing varying levels of product for Pen Windows and CE / Pocket PC, Steanne Solutions GeoGrad - GIS offers a cost-effective solution to suit a range of budgets and applications.

Example Specialist Applications

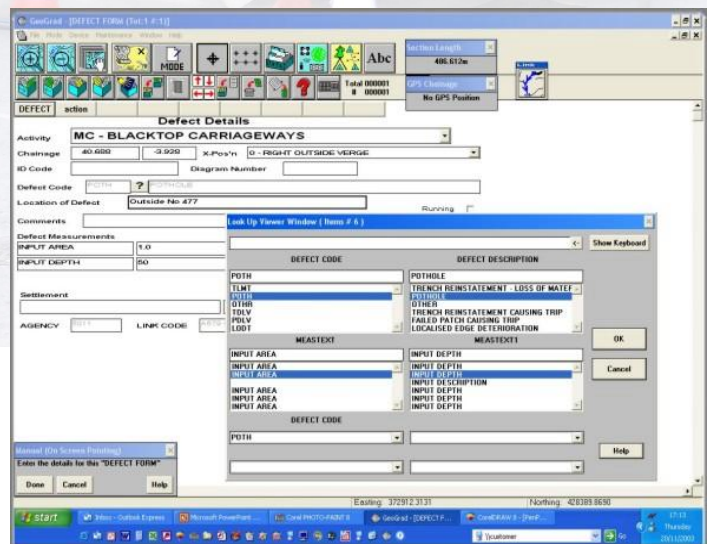
- Highway Safety Inspections
- Highway Inventory Capture
- Street Lighting Inventory Capture
- Street Lighting Inspection, Testing and Night Scouting
- Street Scene
- Agricultural Inspections
- <1m GPS Surveys (Utilities, Environmental)
- Crime Scene Investigations

System Features

- Interactive Mapping and Database Display
- Large Array of Positioning Methods including GPS, Laser, Total Station and Screen Pointing*
- Multi-Window Display for Simultaneous Display of Map and Database
- Optional Remote Communications
- Form Based Database Entry
- Point, Line and Bounded Area Database Attribution
- Multi-Page Database Forms
- Extensive Database Search and Querying*
- Manual Zoom and Automatic Pan of Mapping by GPS, Position or Street Gazetteer
- Efficient Handling and Use of Sectional Linear Networks
- Extremely Simple, Intuitive User Interface
- User Definable, WYSIWYG Database Form Designer
- Zoom and Print to Defined Mapping Scales*



*Limited or not available in GeoGrad - GIS CE / Windows Mobile version





GeoGrad – GIS for Pen Windows

Hardware: (Recommended)

Pen Computer

- Operating System: Win 95, 98, NT & 2000
- Processor Required: Pentium 120 (minimum) or equivalent
- HD – Space Required: 40Mb
- RAM Required: 32Mb
- Security Device: Type II PC Software Lock
- Interface Device: Pen – Stylus
- Display: VGA / SVGA

Options:

- Network Ready Configuration
- GPRS Module

Software

Graphics:

- Multiple Windows support to display unrestricted layers of data including:
- Multiple data sets
- Backdrop mapping in raster / vector formats
- Single or multiple database forms

Positioning

- World-wide projections / transformations, seven parameter and local transformation options
- GPS – RTK, RTCM and uncorrected hand-helds
- Total Station Survey Instruments including robotic control
- Hand-held Lasers
- Tape & Wheel measurements
- Chainage (Station) & Offset
- Intersecting Distances
- Extend Line and Intersecting Line
- Parallel / Offset Lines
- Circle and Rectangle Creation
- Compass and Bearing Offsets with Magnetic to Grid adjustment
- On-Screen Manual Pointing
- Relocation and Update of Existing Features

Database:

- User Definable Form Based Data Entry
- Large Array of Database Field Types including Photographs
- Extensive Record Query and Reporting
- Database Access independently of the Graphics
- Origination and Updating of Database Records, with or without Positioning
- Dependent or Independent Operation of Graphics and Database

P.C. Project Administration:

- WYSIWYG Database Form Builder
- Multiple File Import / Export Module
- Project Upload / Download to Field Unit

GeoGrad – GIS for CE & Pocket PC

Hardware: (Recommended)

- CE & Pocket PC Hand-Helds
- Operating System: Pocket PC / CE2.11
- Processor Required Minimum: 120MHz
- Space Required: Program & Data Resident on minimum 8Mb Compact Flash Card
- RAM Required: 32Mb
- Security Device: PC Flash Card Lock
- Interface Device: Pen - Stylus (Duplicates Mouse Functions)
- Display: 360x240 up to 640x480
- Options:
- Harsh Environment Case
- GPRS Module

Software

- Graphics:
- Multiple Windows support to display multiple layers of data including:
- Multiple Data Sets
- Backdrop Mapping in Vector formats
- Single Database Forms

Positioning

- World-wide Projections/Transformations & Seven Parameter Transformation Options
- GPS - RTK, RTCM and uncorrected hand-helds
- Hand-Held Lasers
- Compass and Bearing Offsets with Magnetic to Grid adjustment
- On-Screen Manual Pointing
- Relocation and Update of Existing Features

Database

- User Definable Form Based Data Entry
- Large Array of Database Field Types
- Record Query
- Database Access independently of the Graphics
- Origination and Updating of Database Records, with or without Positioning
- Dependent or Independent Operation of Graphics and Database

P.C. Project Administration:

- WYSIWYG Database Form Builder
- Multiple File Import / Export Module
- Project Upload / Download to Field Unit

A Module of the Steanne Solutions
GeoManagement Suite of Software