

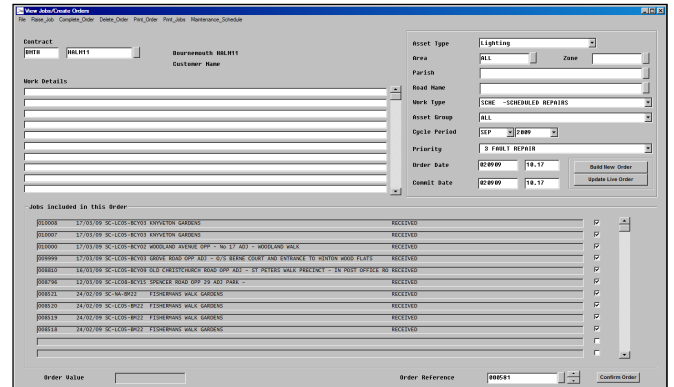


Planning

Effective Planning systems are the key to being able to deliver high quality service to customers and Steanne Solutions GeoWorks Asset Management and Works Planning system has several significant features that enable efficient handling of multiple jobs and work types, allocated to a large number of crews.

Works Orders

GeoWorks has options to raise jobs and Works Orders automatically from field inspection data collected electronically from PDAs or handheld computers, imported from other proprietary systems, or input manually if preferred. NRSWA (ETON5) notices are generated for each job as appropriate.

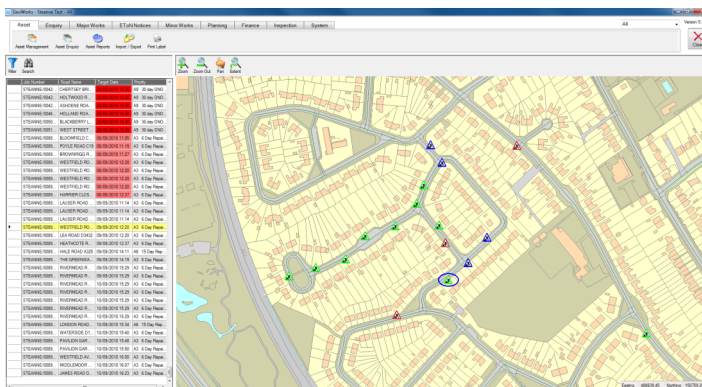


Jobs may be issued individually or grouped logically onto single Works Orders to print or send to a PDA.

Cyclic Maintenance jobs and orders may be raised at any stage; this can be an especially useful feature at the start of the fiscal period when budget considerations are taking place.

These may then be scheduled to pass later to the Works Planning module if required.

By including the full Schedule of Rates, a total cost per job is available with on-going comparisons to budget allocation for the contract.



Planning

The GeoWorks Planning module makes distribution of jobs a simple automated process. Crews may be allocated works areas, expertise parameters, job type functions and a work availability matrix including holiday planning etc.

Jobs allocated in this manner may be viewed and edited as required, and the job distribution viewed in the map window to assess suitability.

Call 0161 368 8137

or email sales@steanne.co.uk

www.steanne.co.uk





Planning

Current jobs may be filtered by Target Date, Location, Category, Priority, Gang or Job Number as required; associated costs are displayed against each item.

When Steanne Lone Worker Monitoring is also used, the operative locations may also be displayed on the map together with the jobs.

Completed jobs are displayed in the Planning screen and on the map until the end of the day.

The Bulletin Board provides an easily read colour coded job status display, enabling rapid identification of jobs nearing or later than their target dates, making the planning and management of jobs a straightforward process.

Job Number	Job Name	Location	Priority	Issue Date	Target Date	Category	Subcategory	Contract	Work Type	Task/Code
STANNE0001	QUARRY GARDENS	50 W QUARRY GARDENS	High	11/05/2010 07:00	11/05/2010 07:00	PR	PRETENDANCE	CL_CCSH	RMW	
STANNE0002	QUARRY GARDENS	50 W QUARRY GARDENS	High	11/05/2010 07:00	11/05/2010 07:00	PR	PRETENDANCE	CL_CCSH	RMW	
STANNE0003	QUARRY GARDENS	50 W QUARRY GARDENS	High	11/05/2010 07:00	11/05/2010 07:00	PR	PRETENDANCE	CL_CCSH	RMW	
STANNE0004	QUARRY GARDENS	50 W QUARRY GARDENS	High	11/05/2010 07:00	11/05/2010 07:00	PR	PRETENDANCE	CL_CCSH	RMW	
STANNE0005	QUARRY GARDENS	50 W QUARRY GARDENS	High	11/05/2010 07:00	11/05/2010 07:00	PR	PRETENDANCE	CL_CCSH	RMW	
STANNE0006	QUARRY GARDENS	50 W QUARRY GARDENS	High	11/05/2010 07:00	11/05/2010 07:00	PR	PRETENDANCE	CL_CCSH	RMW	
STANNE0007	QUARRY GARDENS	50 W QUARRY GARDENS	High	11/05/2010 07:00	11/05/2010 07:00	PR	PRETENDANCE	CL_CCSH	RMW	
STANNE0008	QUARRY GARDENS	50 W QUARRY GARDENS	High	11/05/2010 07:00	11/05/2010 07:00	PR	PRETENDANCE	CL_CCSH	RMW	
STANNE0009	QUARRY GARDENS	50 W QUARRY GARDENS	High	11/05/2010 07:00	11/05/2010 07:00	PR	PRETENDANCE	CL_CCSH	RMW	
STANNE0010	QUARRY GARDENS	50 W QUARRY GARDENS	High	11/05/2010 07:00	11/05/2010 07:00	PR	PRETENDANCE	CL_CCSH	RMW	

Mobile Working



Using Steanne Solutions GeoGrad software for managing jobs in the field, jobs allocated in the Planning module may then be sent electronically to each work crew using PDAs.

Options of screen displays offer maximised views of mapping or data plus a user defined split screen to show both simultaneously.

GPS positioning allows an item to be quickly identified and simple input options enable completed job details to be easily logged.

Updated job status and details are transferred back to GeoWorks for processing and billing.

Summary of Work Planning features

- 1 Review active jobs and job details
- 2 Allocate jobs to gangs / update job status
- 3 Review job status and locations on map
- 4 Import and export jobs to and from PDAs
- 5 Outstanding work / Materials required reports
- 6 Coloured mapping for assets and jobs
- 7 Interfaces with other software (various file formats)
- 8 Work programmes, issue of EToN5 NRSWA notices

Select Repair Job

89695,8.FISHERTON STREET, #16
 35353,1,FLAXMAN COURT, #26
 16824,2,FLAYMAN COURT, #27
 15521,
 90682,
 26619,
 31350,
 29322,

Comments
 OVERHEAD LINES TOO CLOSE

VOICE 1 2

TRANCO_11092007122911.WAV

Photo ASSET00006172_A_1109200
 Photo ASSET00006172_B_1109200

Call 0161 368 8137

or email sales@steanne.co.uk

www.steanne.co.uk

